

Currently Speaking

**Guernsey-Muskingum
Electric Cooperative, Inc.**
17 S. Liberty St.
New Concord, Ohio 43762
740-826-7661 — 800-521-9879
www.gmenergy.com

Board of Directors

Ed BayChairman
Jim RexVice Chairman
Jay GraySecy.-Treasurer
John EnosDirector
Brian HillDirector
Duane ParksDirector
Shirley StutzDirector
Daniel J. GunsettCounsel
Jerry Kackley ..General Manager/CEO

Electric Rates

Farm and Home Service
rate schedule R-1

Service Availability Charge
\$18/month
First 500 kWh/month
@ 12.919¢/kWh
Over 500 kWh/month
@ 10.795¢/kWh

Seasonal Residential Service annual rate schedule S-1

Service Availability Charge
\$216/year
First 800 kWh/year
@ 20.919¢/kWh
Over 800 to 6,000 kWh/year
@ 11.795¢/kWh
Over 6,000 kWh/year
@ 10.795¢/kWh

(Your minimum annual charge will be \$216 per year for service between March 1, 2012, and Feb. 29, 2013.)

Commercial Service rate schedule C-1

Service Availability Charge
\$18/month
First 1,500 kWh/month
@ 12.919¢/kWh
Over 1,500 kWh/month
@ 10.795¢/kWh

Rider T —

Kilowatt-hour Tax applies to all rate schedules.
First 2,000 kWh/month .465¢/kWh
Next 13,000 kWh/month .419¢/kWh
Over 15,000 kWh/month .363¢/kWh

The job has changed

Having been with Guernsey-Muskingum for 20 years, the cooperative is not new to me. However, as general manager, the job has changed. We have now moved back into 17 South Liberty Street, and the summer storm of 2012 is just a memory. Watch in your next bill for an open house invitation to see the renovations and wish Garry Mbiad a pleasant retirement. And look me up...I'll be there.

Your board and I want to continue being transparent and open to your answer questions and concerns. In this month's magazine we have listed the dates and locations of the 2012 Regional Meetings. I hope to meet you at one of these so we can chat and share information.

I believe that good cooperative business is honest and open to all. I've found 95 percent of all "concerns" require additional information or communications from the members. I believe your cooperative follows good business practices, so I want to be proactive with information and communications. I ask any members with questions about their cooperative to write me a note and include it with your bill and meter reading or e-mail us at mailbox@gmenergy.com. If your question is specific, someone will call or stop to visit. If your question is general, it may be printed in *Country Living* magazine with a response or it could be a topic at this year's regional meetings.

Today's electric issues are complex: our home technology likes smooth, perfect power; our costs are dependent upon generation sources and government decisions; we sit in a rural area with lots of hills, hollows, trees and crooked roads; June gave us a record storm; and costs continue to rise for materials, benefits and fuel.

There are many challenges ahead that we must face together. I ask for your questions because many of your fellow members may share the same concerns. I look forward to hearing from you.



Jerry Kackley
General Manager/CEO

Invitation to your regional energy meetings

Please pick the most convenient meeting for you and plan to attend any or all of this year's regional meetings this fall to learn more about your cooperative.

DATE	LOCATION
Tuesday, Oct. 23	GMEC Community Room
Thursday, Oct. 25	Guernsey County Fairgrounds
Tuesday, Oct. 30	Muskingum County Welcome Center
Thursday, Nov. 1	Dave Barber Civic Center, Newcomerstown



Along with rousing discussion, members will receive free compact fluorescent light bulbs, meet with directors and employees and spend time with their friends/neighbors/fellow cooperative members.

All meetings will begin at **6:30 p.m.** and end at **8 p.m.** Refreshments will be provided. We look forward to seeing you there! Call 1-800-521-9879 for information or directions.

Fireplace efficiency

Don't let energy savings go up in smoke

Your fireplace creates a warm, cozy atmosphere during wintry weather, but don't let it add unnecessary dollars to your electric bill.

Fireplaces heat the room they're in but at the expense of the rest of the house. Most of the heat in traditional fireplaces goes up the chimney instead of warming living space, and the draft pulls heat from other rooms. So if your thermostat is located away from the fireplace, it will work harder to maintain room temperatures for the rest of the house.

Fireplace "inserts" help boost energy efficiency. However, emissions from old inserts and fireplaces without inserts are up to 20 times worse than using U.S. Environmental Protection Agency (EPA)-certified wood stoves, pellet stoves or gas/oil furnaces. So

look for an EPA-certified insert if you want to supplement your home's heating.

Contact a local retailer to learn about efficient stoves and inserts that will circulate hot air into a room to help lower heating costs. But keep in mind the disadvantages of using high-maintenance fires as heat sources, including constant attention and ash disposal.

If you don't have an efficient insert but love a crackling fire, follow these measures for safety and improved efficiency.



Ray Crock,
Energy Advisor

Seal those cracks. While sealing drafts around your home, don't forget to check the chimney. Smoke and heat that escape through cracks can pose a fire hazard. It's best to hire a professional to fix cracks in high-heat areas.

Fight the draft. If you plan on a long-lasting fire, lower the thermostat to save energy — just be prepared to wear a sweater in other rooms — and resist the temptation to crank the temperature back up after the fire goes out.

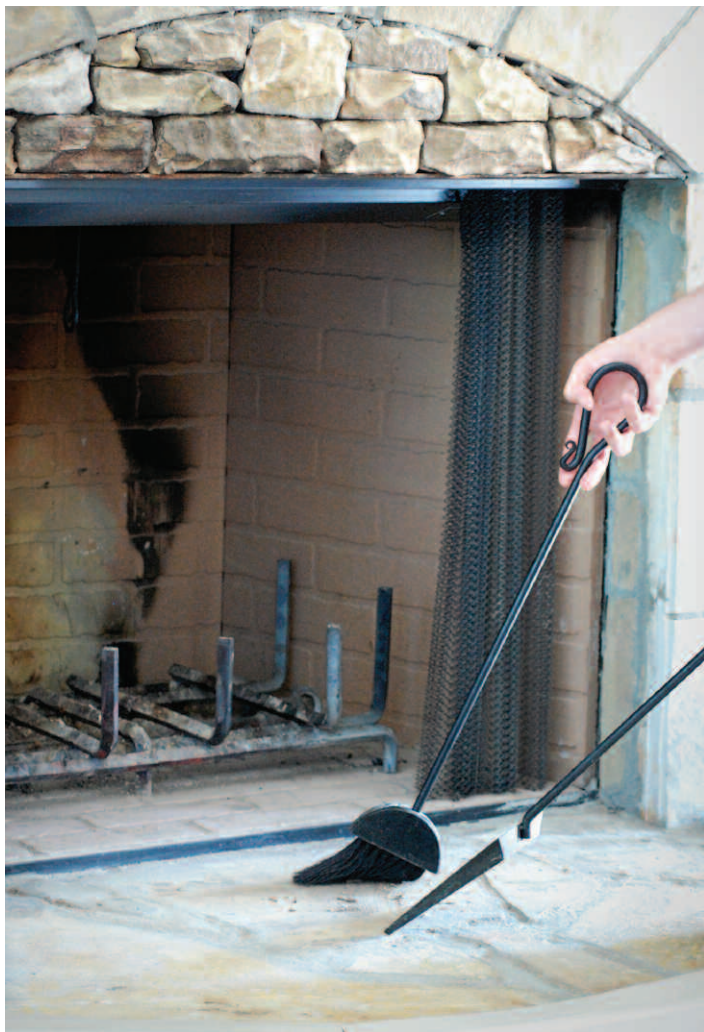
Clean sweep. A National Fire Protection Association standard suggests having your chimney and fireplace inspected once a year, and cleaned or repaired when necessary. Even if you don't use your fireplace often, an annual inspection will find any blockage from animal nests or other deterioration.

Batten down the hatch. Keep the chimney flue closed when not using your fireplace to prevent conditioned or heated air from escaping.

Choose your wood wisely. Wood that's dried at least six months provides the best heat, so avoid any that's wet or newly chopped. And the harder the tree species, the longer your fire will burn. This makes ironwood, rock elm, hickory, oak, sugar maple and beech good choices. Store wood off the ground and away from your house to remove the threat of termite infestation, and cover the top to lessen moisture but leave the sides open for circulation.

Sources: U.S. Department of Energy, Consumer Reports, U.S. Environmental Protection Agency, Chimney Safety Institute of America

Kelly Trapnell writes on safety and energy efficiency issues for the National Rural Electric Cooperative Association.



Fires are a low-efficiency, high-maintenance source of heat requiring constant tending and ash removal.

Source: Kelly Trapnell

Karaoke 'Country style' winners

Karaoke "Country Style" Contest was an opening-day event sponsored by Guernsey-Muskingum Electric Cooperative, Inc. at the 166th Muskingum County Fair. A total of 30 singers in three age categories competed with their favorite tunes. In the under age 15 division the winner was Madalynn Bruckelmyer of Heath. The winner for the 15 to 25 age group was Tiffany Beck of Zanesville. The winner of the over 30 age group was Barb Marling of Zanesville. Each winner received a \$50 Visa card and all participants received a sandwich and drink coupon to use at the fair. Judges for the evening were Jay Bond and Kenny Wayne, and sound was provided by Sandy Groves.



Madalynn Bruckelmyer, Tiffany Beck and Barb Marling

Bamfield named Guernsey County Junior Fair queen

Congratulations to Cheyanne Bamfield, 2012 Guernsey County Jr. Fair queen.

Cheyanne is the daughter of Rudy and Lori Bamfield of Cambridge. She is a 14-year member of the Town and Country 4-H club. Her projects have included dairy, rabbits, swine, lambs and many still projects.

Cheyanne has her state FFA degree and is a sophomore at Zane State College in the Parks, Recreation and Wildlife program.



Nondiscrimination Statement

Guernsey-Muskingum Electric Cooperative, Inc., is the recipient of federal financial assistance from the U.S. Department of Agriculture (USDA). The USDA prohibits discrimination in all its programs and activities on the basis of race, color, national origin, age, disability, and where applicable, sex, marital status, familial status, parental status, religion, sexual orientation, genetic information, political beliefs, reprisal, or because all or part of an individual's income is derived from any public assistance program. (Not all prohibited bases apply to all programs.) Persons with disabilities who require alternative means for communication of program information (Braille, large print, audiotape, etc.) should contact USDA's TARGET Center at 202-720-2600 (voice and TDD). To file a complaint of discrimination, write to USDA, Director, Office of Civil Rights, 1400 Independence Avenue, S.W., Washington, D.C. 20250-9410, or call toll free 866-632-9992 (voice) or 800-877-8339 (TDD) or 866-377-8642 (relay voice users). USDA is an equal opportunity provider and employer.

Co-op Notes

Geothermal heating/cooling system — \$300 rebate

We have a \$300 rebate to help pay for the most efficient underground heating, cooling and hot water system available today. A radio-controlled switch is required on the unit and on your electric water heater of at least 40-gallon capacity. More than 260 of our members are using geothermal.

Dual Fuel — \$300 rebate

If you install a new add-on electric heat pump with a fossil-fuel back-up and have an electric water heater, which is at least 40-gallon capacity, you are eligible for a \$300 rebate. Radio-controlled switches are required to be installed on both the heat pump and water heater. Please call your cooperative for details. Over 800 members are using dual fuel.

Cool Returns — \$100 rebate

Are you having central air conditioning installed or a new electric heat pump with electric resistance heat back-up? Allow your cooperative to install a radio-controlled switch and receive a \$100 rebate check. Over 100 members are using Cool Returns.

Water heater with a hole

The four-inch hole in the side of our tank is great for cleaning out sediment. This rebated tank is available for *free delivery*. We also have \$50 or \$100 checks to send you if you purchase a tank somewhere else. Give us a call for details.

Water heater installation available

If you purchase your water heater from G-M, our members services technician, Tim Fisher, can install it for an additional charge. Give us a call.

Radio-controlled switch

“What a deal!” If you don’t already have a radio-controlled switch for your electric water heater, of at least 40-gallon capacity, please call and Tim Fisher will install one — FREE. More than 5,300 G-M members have an RCS on their water heaters. This entitles you to a discount and free maintenance (except cleaning) including parts and labor on your electric water heater. Some exclusions apply; call us for details.

GenerLink™

We want you to use your portable generator safely. Call the member services department at GMEC and ask them about GenerLink™. GenerLink eliminates the use of extension cords and other connections that can be dangerous to members and linemen.

Meter Reading

You can enter your meter readings online at our website, www.gmenergy.com. And as always you can mail your readings or call us 24 hours a day with meter readings.

Co-op Connections Card

The Co-op Connections Card is free to all GMEC members and one card can be used by the entire family. The card can also be used to receive discounts nationwide on lodging, entertainment, dining and more. Visit www.gmenergy.com and click on the link to explore the possible discounts available to you.

As a member of an electric cooperative, you have access to free energy savings tips and information that also will help you save money. We also offer in-home energy audits.

Whether your question is about heating and cooling systems, weatherproofing and insulation, water heaters or other appliances, the Energy Advisor at GMEC can help.

Call your co-op office today to have your questions answered. 800-521-9879



Your Touchstone Energy® Cooperative

Is your name and location/ account number here?

If it is, call your cooperative’s office and receive a **FREE** home change out to compact fluorescent light bulbs. (Limit 12 bulbs) Thanks for reading the “local pages” of *Country Living* magazine.

- #35-0010-01-02James L Misock
- #37-0164-05-03.....Sierra N Giesey
- #41-0269-09-02.....Michael E Lanzer
- #44-0101-21-00.....Bradley G Carpenter
- #49-0001-14-01.....David W Watson
- #52-0548-10-01.....Thomas Christmas
- #56-0060-18-02Robert Little
- #68-0397-33-02Carmen E Yates

IT PAYS TO BUY QUALITY!

TWO WAYS TO SAVE:

1) **Rebates** — For water heaters purchased at Guernsey-Muskingum:

Prices include: **FREE Delivery**
FREE Maintenance (except cleaning), including parts and labor
FREE Pressure Relief Valve
FREE Radio-Controlled Switch

50-gallon: dimensions 22 3/4" dia. x 51" hght. (Weight = 230 lbs.)

\$600 Average Wholesale Price
 \$500 Co-op Cost
\$175 Member Discount
\$325 Net Member Cost, plus tax

80-gallon: dimensions 26" dia. x 58" hght. (Weight = 325 lbs.)

\$700 Average Wholesale Price
 \$575 Co-op Cost
\$200 Member Discount
\$375 Net Member Cost, plus tax

120-gallon: dimensions 28" dia. x 69 1/4" hght. (Weight = 410 lbs.) Special order

\$850 Average Wholesale Price
 \$700 Co-op Cost
\$250 Member Discount
\$450 Net Member Cost, plus tax

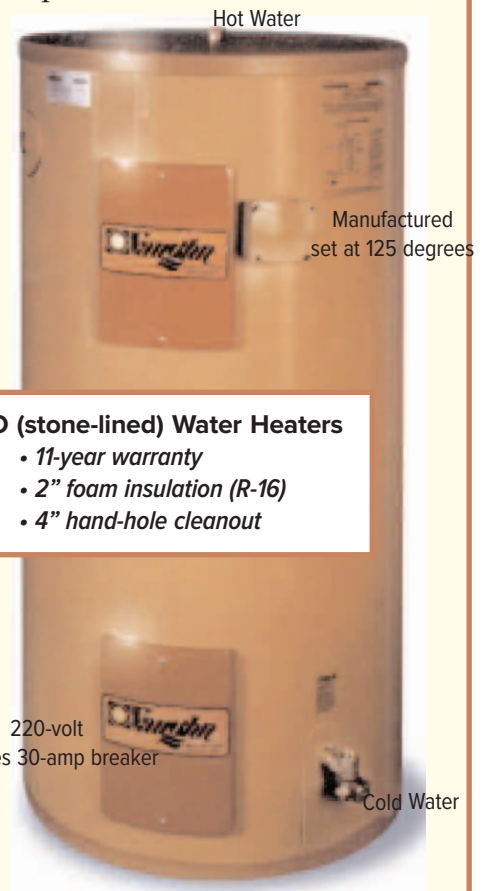
Installation available for an approximate charge of \$120.

***Prices do not include any taxes.**

2) **Rebates** — for water heaters purchased elsewhere

<u>\$100 cash back for:</u>	<u>\$50 cash back for</u>
• 50-gallon or larger	• 40-gallon
• 7-year warranty (or longer)	• 7-year warranty (or longer)

To qualify for all rebates,
 members must allow the free
 installation of a radio-controlled switch.
Call Guernsey-Muskingum for more details.
740-826-7661 or 1-800-521-9879



SEPCO (stone-lined) Water Heaters

- 11-year warranty
- 2" foam insulation (R-16)
- 4" hand-hole cleanout

Official Notice of Intention to Reallocate Patronage Capital



The following is a listing of former members of Guernsey-Muskingum Electric Cooperative, Inc., who received service from the cooperative in prior years. Attempts were made to mail capital credit checks to these former members in 2008. These capital credit checks have remained unclaimed for at least four years.

The Cooperative's Code of Regulations provides that capital credit payments which remain unclaimed for four years shall, after proper notice is given, be reallocated to the current margins of the cooperative. After such reallocation, these unclaimed payments will no longer be available for payment to the former members listed.

If you have any information on any of the names published in this listing, please call the cooperative's office at one of the numbers listed below. Thank you for your help in locating our former members.

**New Concord
740-826-7661**

**Toll Free
1-800-521-9879**

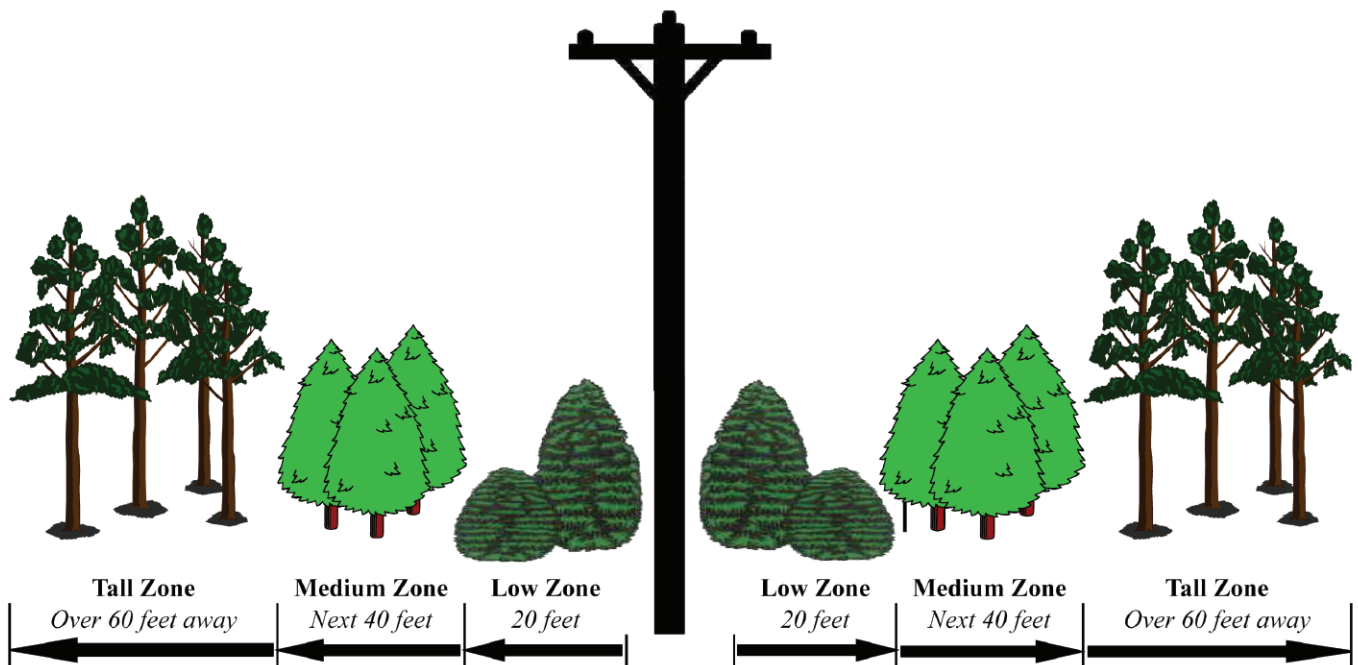
ADAMS JAMES	BARNES LARRY	BROWN DELILAH	CLAGETT WILLIAM S
ADKINS FLORENCE M	BARR MICHAEL	BROWN NOEL B	CLARK WARD JR
ADKINS JESSE K	BASEY LOUIS J	BROWNING ALAN D	COEN CLIFFORD
ADKINS WILLIAM M	BASH RALPH	BRUMAGE BRAD	COLANGELO GENE
AERIAL COMMUNICATIONS	BASLER JOHN	BUCHAN MYRA	COLUMBIA NATURL RESOURCES
ALASARA CASSI	BATES BETTY S	BURN & ELIKAN	COLWELL DONALD
ALEXANDER C	BATES CHARLES T	BURWELL JANET E	CONCORD DUPLEX
ALEXANDER LESTER	BEAR JACQUELIN E	BUZZARD DEBORAH	CONCORD SQ LTD
ALRAHMAN INVESTMENT INC	BEEBE TROY	CABLE SYSTEMS U.S.A.	CONNER C F
AMERITECH CELLULAR SERVICE	BENNETT JERRY	CAIN JAMES M	CONSOL RESC OF AMERICA
ANDEARS JOYCE	BENTLEY JAMES A	CALLANDER & KIMBREL INC	COON LOWELL
ANDERSON EDWIN	BEREA OIL & GAS CORP	CALLOW JOHN M	COUGHENOUR ELIZABETH
ANDERSON JACK	BERGDORF DONALD G	CAM SAVINGS & LOAN	COVER GLENN E
ANDERSON JAMES V	BETHEL CHARLES W	CAMPBELL DONALD C	COX BARBARA
ANGLER DAVID T	BIBART THOMAS E	CARLESS RESOURCES INC	COX COMMUNICATIONS
ANKRUM DEBORAH	BIGLER DALE	CARPENTER JEAN	CRAWFORD DAVID
ANSEL KEVIN	BILBY JAMES	CARPENTER LARRY R	CRAWFORD RAYMOND
ARNOLD MICHAEL E	BIRCH JAMES L	CARRELL JAMES W	CROSS ROBERT J
ARROW OILFIELD SERVICES	BIRDS RUN GRANGE	CARROLL ROLLAND M	CROWN OIL FIELD SUPPLY
ARTER CHERYL	BLACK JAMES W	CARTER LELA	CULBERTSON ROBERT L
ASBURY CHAPEL	BLACKBURN NORMAN	CASEY M L	CULLISON BRUCE H
ASHTON DELBERT L	BLAKE BETTY L	CASTROVINCI ANTHONY B	CUNNINGHAM THOMAS A
ASP JAMES	BONNETT RICHARD C	CELMER THOMAS	CURL THOMAS A
ATLAS ROOFING CO INC	BOWERS JAMES A	CHIEF PETROLEUM INC	CUTLIP JACK
BAILEY ROGER L	BOYLE DENNIS	CHILENSKY SHIRLEY E	D'ALOIA JOHN
BAKER JOHN W	BRADEN JOHN	CHRISTA OIL CO	DANLEY ALAN
BALLENGER ROBERT	BRITTON WANDA L	CHURCH TODD	DAVIS HAROLD
BARKER RODNEY	BROWN AMY S	CIVIN JAMES	DAVIS JAMES W

DAVIS ROBERT	ESKOLA HENRY	HAGAN CORLE R	HUTCHENS MARTHA
DAWSON J R	EWING DANIEL B	HAHN EARL	HUTCHISON WILLIAM A
DEIM EDWARD B	FILIPEK JOSEPH L	HALL MARK	HYLTON FRED E
DEJONG JOYCE A	FINDLEY OIL CO	HALL MERVIN G	IDEN CHARLES M
DENNIS RANDALL	FISHER CHRIS	HALL VICKI	IHINGER CAROLYN
DENNY ROBERT D	FISHER THEODORE C JR	HAMILL ROBERT	IRBY ELDON E
DICKINSON JOHN H	FLESHER MICHELLE	HAMILTON SHERMAN T	IROQUIS ASSOCIATES
DIETRICH MICHAEL G	FOGLE ERIC C	HAMMER GREGORY	JACKSON DELMA
DINGEY ESTELLA	FOLEY DUANE P	HAMMER SUSAN	JACKSON ELAINE
DINGEY ROBERT G	FORAKER CHARLES	HAMMERS THOMAS	JACKSON RALPH E
DIPOLD JOSEPH	FORD HARRY D	HAMMERSLEY DANA	JACKSON WILBUR E
DIXON R M	FORTUNE GAS & OIL CO	HAMMONS CONSTANCE L	JAY'S UNOCAL 76
DOBBINS JAMES W	FOUST JERROLD	HANUS JOANN	JENKINS DALE
DOBSON SUSAN	FREEMAN JOHN	HARDY DEBORAH A	JERLES CHAD
DODD ROBERT	FRONTIERVISION PARTNERS	HARPER LAWRENCE	JIVIDEN H
DOLAK TAMMY L	FUSNER ROBERT	HARPER WILLIAM L	JOHNSON DOREEN E
DOTSON DAVID	G.W.F. CORP	HARRIS CHARLES K	JOHNSON VAUGHN V
DOTY JOHN T	GAITHER MARY V	HATFIELD JEWELL	JONES ALTEZA
DOVER JAMES A	GANN IRA	HAWTHORNE HELEN M	JONES K F
DOZER MARJORIE L	GARBER FRED B	HAYDEN CLARENCE E	KASER ROBERT E
DREW TRACY	GARDNER THOMAS M SR	HEADLEY JOSEPH	KAUFMANN MARY
DRUSHAL JEFFREY T	GASPRO ENERGY INC	HEFNER RONALD	KAVCAK MICHAEL J
DUFFEY R T	GASSAWAY FRANKLIN L	HENARY GEORGE	KAVEH FRED
DUNCAN LOUIS T	GEBHART BARBARA	HESSON WILLIAM	KEIRNS JIM
DURBIN THOMAS L	GEORGE CLARENCE C JR	HICKMAN PRESTON J	KELTNER JAMES
DUTCHER MELVIN	GERTNER CATHARINE M	HILL BARRY D	KEYES ROBERT J
DYE LEO F	GESSEL CHARLES G	HILL RICHARD	KIMBLE E C
DYER ERIK C	GHEEN AMY	HILTON VIRGIL E	KING BRIAN D
DYNAMIC DRILLING INC	GIFFIN DELBERT L	HITTLE MATTHEW L	KING HELEN E
EASTERN STATES OIL & GAS	GILMORE A M JR	HIXSON WALTER O	KING PATRICIA
EASTIN DAVID	GLASGOW MARY H	HOLDREN THOMAS E SR	KING ROGER E JR
EDWARDS P	GLAUB TADD A	HOLETON RHONDA	KING YVONNE
EIBEL JOLINDA	GODBY JUANITA M	HOLLINGSHEAD KARL	KING LIMESTONE
EIKENBERRY ALICE M	GOODWIN PAUL	HOLLINGSHEAD TAMMY	KIS PAL
ELLIS MITCHELL	GRADY J	HOLT RONALD	KITZ FRED
EMERSON EUNICE	GRAEWE RITA	HOON HERBERT	KOHUT BARRY E
EMLER DON	GRATIOT DRILLING CO	HOOVER THOMAS W	KOVACH MARY
ENERGY RECOVERY	GREEN JAMES	HOPKINS ANNETTE C	KRAUSE MERLE D JR
ENINUN, INC	GRIFFIN HUGH F	HORTON LAURA	KUHL VIOLET
ENOCHS NANCY A	GRIFFITH ROBERT	HOULEHAN GARY K	KUHN ROGER SR
ENTERPRISE GAS & OIL	GRUBB DAVID R	HUFF BRIDGETT R	LANDERS TIMOTHY C
ENTERPRISE WELL SERVICE	GULLEY RICHARD	HUFFSTUTLER C M	LANDOW B T
ERWINE JAMES	GUSTAFSON RALPH A	HURSEY FRANCIS	LANDPROVEST INC
ESHELMAN JOAN	GUZZETTA DICK	HUSTON CURTIS	LANGFORD STACY

LAPPERT CHARLES	MCCLOSKEY JANET I	MOSCATO D	PIATT DONALD C
LAPRADD GEORGE	MCCONNELL JAMES	MOSER ZACHARY G	PINE VALLEY TRUST
LAVELLE EDWARD F	MCCORMICK KEVIN C	MOWRY BRIAN	POFF TIMOTHY M
LAWLER WILLIAM	MCDOWELL JAMES P	MUELLER DAVE	PORTER KENNETH
LEADER DEVELOPMENT CORP	MCSELFRESH GLENN M	MULLEN LISA L	PORTER WILMA B
LEE DERL	MCFIN OIL CO	MURRAY EDWARD R	POST DUANE C
LEE THOMAS	MCGINNIS WILLIAM F	MUSKINGUM MINING INC	PRESLER KURT M
LEMASTER PAUL	MCKIM JEAN E	N-STARR ENERGY INC	PRICE DAVID
LESTER CARL W JR	MCKINNEY JEFFREY D	NALLE WAYNE R	PROUDFIT CURT
LINDEN GEORGE L	MCNEAL JAMES	NANKISHORE NALINI N	PYLE GARY
LOCKHART DORIS	MCNERNEY DONALD J	NASSER SCOTT E	R P J ENERGY FUND MGMT
LOGAN FRANCES	MCNUTT JOHN	NEFF LINDA K	RACHTEN EARL
LOHMAN ROBERT	MCPHERSON DONALD	NICHOLSON KELLY D	RANIERI ANDREW M
LONG KIM S	MCVICKER WILLIAM	NOBLE OIL CORP	RARICK PATTI A
LOOMIS HARDY	MELL DOUGLAS L	NORMAN MURL	RATH E A
LOTT MICHAEL J	MELTON PAUL	NORRIS ERVIN E	RAY DEBORAH
LOUGH MYRTLE E	MERZ WILLIAM J	NORRIS TANYA L	REBAR MICHAEL
LOWE JACK E	META CHEMICAL CO INC	OHIO BELL TELEPHONE CO	REED EUGENE
LOWE TINA	METZ JAMES	OHIO INNS, INC	REED GARY A
LOWE WILLIAM E JR	MILESTONE COMM OF OHIO	OHIO PARTNERS OIL CO	REED INA M
LUCAS RAFF JR	MILEY NANCY	ORR THOMAS	REED JIM
LUCKETT CHARLES	MILLER BILL R	PAISLEY DAVID	REED MARK
LUDCO INC	MILLER KENNETH D	PALLET RECYCLING	REGENCY CONSTRUCTION
LUETTGEN DAVID	MILLER MARIE	PALM JACK R	REID JERRY
LUMPKINS MARLENE E	MILLER MICHAEL L	PALMER P	REYNOLDS D F
LUTEY ELWOOD D	MILLS DOROTHY L	PALMER WILLIAM R	RICHARDS NORMAN E
LUTZ GEORGE J	MILLY JOSEPH C	PARCELLS DAVID A	RICHARDSON DOUGLAS
M-B OPERATING CO INC	MISSION GAS	PATRICK THOMAS E	RIDGEWAY RAYMOND E
MADINGER ALBERT R	MITCHELL CHARLES	PATTERSON ROBERT	RIVERS RUTH N
MAGBEE ERCAL	MITCHELL THOMAS R	PATTISON MARK R	ROBERTS OLLIE E
MAPLE MARK D	MOHR JAMES P	PATTON J R	ROBERTS TIMOTHY
MARCUM DANNY T	MONTGOMERY EDWARD	PAULEY HARLAN	ROBERTS REALTY
MARIETTA PETROLEUM INC	MOORE CARL J JR	PEABODY COAL CO	ROBERTSON DONNA
MARLATT MARGARET E	MOORE CHARLES	PEDDICORD JAMES	ROBINSON NANCY
MARSHALL ELIZABETH A	MOORE CHRISTINA	PEMCO GAS INC	ROBINSON ROBERT L
MARTIN ERIC D	MOORE DARREL D	PENNINGTON HARLEY	RODGERS & ROSEN
MASS JOHN	MOORE DONALD W	PEOPLES WILLIAM D	ROGER C DUPKE OIL CO
MASSENGILL A	MOORE JANE A	PERRY JASON H	ROLL NINA R
MAYNARD MICHAEL R	MOORE MICHAEL P	PETERSON DAVID K	ROMANS ROBERT
MCCANTS MARJORIE L	MORAN JACKIE S	PEZZOPANE GARY T	ROTH HARRIS
MCCARTY JON	MORGAN LARRY E	PHILLIPS J R	ROTH HARRIS J
MCCAUSTLAND MICHAEL P	MORGAN MARY L	PHILLIPS LYDIA	RUDISH CHARLES J
MCCLEAN WILLIAM D	MORLEY DEBORAH	PHILLIPS NORMAN	RUDISH MARY E

- | | | | |
|-----------------------|-------------------|------------------------|----------------------|
| RUPE ERMA I | SETTLES DIANA L | SMITH MARGARET | STEPHENS JAMES V |
| RUSSELL ALICE | SEXTON JOHN L | SMITH MARTHA M | STEVENS ANDREW |
| RUSSELL GEORGE W | SEYBOLD C O | SORENSEN PETER H | STEVENS RAY A |
| RUSSELL JAMES R | SHANER RICHARD O | SPRANKEL THOMAS E | STEVENS THOMAS H |
| RUTTER LARRY | SHEPARD KEVIN P | SPRAY EARL A | STITZLEIN DEAN |
| S H PARKS & ASSOC INC | SHEPARD SAM | ST CLAIR STACY | STOCKER & SITLER INC |
| SALTERS HAZEL E | SHERRICK KARL V | STACY MORRIS R | STOTTS M L |
| SARGENT DAVID J | SHOENFELT STUART | STAHR DONALD W | STOVER JOHN R |
| SAUNDERS WILLIAM L | SHOLTIS BRIAN K | STALLION OIL & GAS INC | STRANDBERG PATRICIA |
| SCHMIDT RACHEL E | SHULL LEE | STALNAKER RAY | STUBBS JEFF |
| SCHMIDT RICHARD | SIMMONS DOROTHY A | STALNAKER RICHARD | SWEDBERG JOHN C |
| SCHOELKOPF ALBERT | SIMS JAMES | STANFIELD TED | TALBERT CLIFFORD R |
| SCHREIBER KEITH R | SMALLEY JEFFREY S | STARKEY BETH | TATAR FRANK |
| SCHROEN ROBERT | SMITH G L | STARKEY GARY | TAYLOR DOUGLAS S |
| SCOTT RUTH A | SMITH H I | STARLING HERBERT G | TAYLOR JOHN |
| SEABRIGHT JAN L | SMITH JAMES R | STEINER THEODORE | TENCH ROBERT |
| SECKMAN ARIS K | SMITH JEFF | STEPHEN FRANK L | THOMAS EDWARD W |
| SEMINTER EDWARD A | SMITH LAURIE | STEPHENS GARY L | THOMAS GENE R |

Right tree in the right place



Tall Zone	Medium Zone	Low Zone - Utility Easement Area	
Tall or large trees with maximum height of over 60 feet.	Plant medium trees with a maximum height of 30 - 60 feet	(Under wires) - It is better not to plant in this area. If you do, plant shrubs only or small low-growing ornamental trees with a maximum height of 15 feet.	GMEC will maintain 20 feet in any direction around and anything above energized primary conductors on a five year cycle.

- | | | | |
|-------------------------|-------------------------|------------------------|-----------------------|
| THOMAS JANET L | TURCOTT-BRINK JUDITH K | WALTON STEVEN B | WICZEN STEVE C |
| THOMAS JOHN | UNION HILL GRANGE | WARD L E | WIGGINS DAVID |
| THOMAS JUANITA | UNITED STATES CELLULAR | WARREN RICHARD B | WILKEY EVERETT L |
| THOMAS LINDA M | USA WASTE SERVICES INC | WASSAM DONALD R | WILLIAMSON KATHLEEN L |
| THOMAS NOVA W | VAIL WILMER J | WATSON JAMES E | WILSON J L |
| THOMPSON JEFF A | VAN VLECK JIM | WATSON LISA R | WILSON MARLENE |
| THOMPSON VICTOR E | VANSPRONSEN ROEL | WATSON WILLIAM | WOLFE JOHN |
| THULL EDWARD | VANVICKLE EDDIE E | WAYBLE DALE | WOLFORD DOUGLAS A |
| TICE LARRY | VERMILLION D R | WEBB GEORGE | WOLFORD FRANCES |
| TIMES MIRROR CABLE T V | VEST EDMOND | WEEKLEY CYNTHIA K | WOOD L F |
| TIPPLE RALPH N | VETERANS ADMINISTRATION | WELCH CATHERINE | WOODLAND GREG |
| TITAN ENERGY CORP | VICKERS DONALD | WELL CARE SERVICES INC | WOOLARD ROBERT |
| TODD JAMES G | VICKERS G | WELSH D G | WOOLF JOAN |
| TRELKA JAMES M | VILLARS JAMES P | WENTEX INTERNATIONAL | YONTZ DOROTHY |
| TRI-AD CORPORATION | VINCENZO F H SR | WEST BRYAN C | ZAK JASON |
| TRI-GRAI INC | WADDLE JEFFREY L | WESTERN CO OF AMERICA | ZAVODSKY WM R |
| TRI-PETRO WELL SERV INC | WADE SABRINA | WHEELER STACI | ZIMMERMAN LAURA |
| TRIBBLE MICHAEL | WAGNER JOSEPH E | WHIPPLE WILLIAM W | ZOOK LESTER R |
| TRIDENT ENERGY RES INC | WAGNER ROBERT | WHITE F R | |
| TROUT PHILLIP E | WALDHEIM G | WHITE HAROLD R SR | |
| TRUBISKY NICK | WALLER MICHAEL | WHITEHAIR FRANCES M | |
| TRUSHEL RAY | WALTERS LESLIE | WICKEM BRENT W | |

1 billion+
people own co-ops in

90+
countries, generating
100 million jobs.

Did You Know...


Co-ops provide electricity, financial services, insurance, marketing, food and more!

Celebrate the business model that puts people **FIRST**.

Celebrate Cooperatives!

2012 International Year of Cooperatives

Learn more at www.usa2012.coop




Energy Efficiency

Tip of the Month

Two degrees can make a big difference on your electric bill. Setting your thermostat 2 degrees Fahrenheit higher in summer and lower in the winter results in major energy savings. Investing in a programmable thermostat can save even more — these devices automatically lower and raise your home's temperature. Set it and forget it! Find more ways to save at TogetherWeSave.com.

Source: Touchstone Energy® Cooperatives

The Seven Cooperative Principles

Cooperatives around the world generally operate according to the same core principles and values, adopted by the International Cooperative Alliance in 1995. The International Cooperative Alliance is a global membership association of co-ops and co-op support organizations.

Cooperatives trace the roots of these principles to the first modern cooperative founded in Rochdale, England in 1844.

2012
International
Year of
Cooperatives



1. Voluntary and Open Membership

Cooperatives are voluntary organizations, open to all people able to use their services and willing to accept the responsibilities of membership, without gender, social, racial, political or religious discrimination.

2. Democratic Member Control

Cooperatives are democratic organizations controlled by their members — those who buy the goods or use the services of the cooperative — who actively participate in setting policies and making decisions.

3. Members' Economic Participation

Members contribute equally to, and democratically control, the capital of the cooperative. This benefits members in proportion to the business they conduct

with the cooperative, rather than on the capital invested.

4. Autonomy and Independence

Cooperatives are autonomous, self-help organizations controlled by their members. If the co-op enters into agreements with other organizations or raises capital from external sources, it is done so based on terms that ensure democratic control by the members and maintain the cooperative's autonomy.

5. Education, Training and Information

Cooperatives provide education and training for members, elected representatives, managers and employees so they can contribute effectively to the development of their cooperative. Members also inform the general public about the nature and benefits of cooperatives.

6. Cooperation among Cooperatives

Cooperatives serve their members most effectively and strengthen the cooperative movement by working together through local, national, regional and international structures.

7. Concern for Community

While focusing on member needs, cooperatives work for the sustainable development of communities through policies and programs accepted by the members.

Don't let electrical hazards haunt Halloween!

Halloween is the most festively frightening night of the year. But don't make yours fraught with danger. Here are some safety reminders:

- As you're decorating, make sure you and your parents check for cracked sockets, frayed, loose or bare wires, and loose connections.
- Fasten all outdoor lights securely to trees and other firm supports. Do not use nails or tacks that could puncture insulating cords and damage wires.
- Make sure decorative lighting is well-ventilated, protected from weather and remains a safe distance from anything flammable like dry leaves and shrubs. Do not coil extension cords while in use or tuck under rugs or drapes.
- Make sure all outdoor electrical lights and decorations are plugged into an outlet protected with a ground fault circuit interrupter (GFCI). If your outlets aren't equipped with GFCIs, have an electrician install them or

buy a GFCI adapter plug. Don't overload outlets with too many extension cords and strands of lights.

- Keep power cords off walkways and porches that trick-or-treaters may use. You don't want them to trip.

- Have mom or dad leave the porch light on for trick-or-treaters, and be sure to turn out all spooky lights and decorations before leaving home or going to bed. This will also save energy.

For more tips visit www.SafeElectricity.org.

Source: *Electric Consumer*



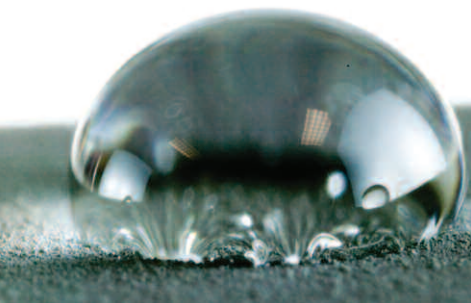
The way of the lotus

Scientists develop protective coatings for power lines that mimic lotus plants' ability to repel water

BY ANGELA PEREZ

Imagine dropping your cell phone into a swimming pool — and then, after a panicked retrieval, finding it's completely dry and works just fine.

This scenario is now entirely possible thanks to recent developments in water-repellent coatings known as superhydrophobics. Once applied, superhydrophobic coatings render a surface not just water resistant (like a Gore-Tex-treated raincoat), but completely untouchable by liquids. The potential is astounding.



Surfaces coated with a superhydrophobic spray make the surface virtually “unwetable.” That means coated power lines would repel freezing rain, preventing damaging ice from forming. Sources: Ilker Bayer, Eric Loth, Darren Stevenson, Scott Robinson, Imaging Technology Group; Beckman Institute; and the University of Illinois

“lotus effect.” Revered by many Far East cultures for its purity, the aquatic lotus plant boasts large, round leaves covered in hairy micro- and nanoscopic protrusions. These protrusions instantly repel liquids (like raindrops, for example) by forcing them outward at a 150- to 180-degree angle.

In essence, that force allows air to enter between the leaf and the droplets, keeping water from ever actually touching the leaf. In fact, if you were to immerse an aquatic lotus into a tank of water, the foliage would appear coated in shimmering translucent silver because air is trapped between the water and the leaf's surface.

“Just like lotus leaves, synthetic superhydrophobic coatings make surfaces virtually ‘unwetable,’” Lovas states. “Manufacturers are quickly finding ways to put the products to use.”

For electric utilities, Dr. John Simpson, a pioneering researcher at the U.S. Department of Energy's Oak Ridge National Laboratory, has

“Practical application of this technology will save electric consumers millions of dollars in repair costs by protecting equipment that is vulnerable to liquids, like ice,” asserts Tom Lovas, technical liaison and contractor with the Cooperative Research Network (CRN), the research and development arm of the National Rural Electric Cooperative Association.

Bio-inspiration

Scientists refer to superhydrophobics as the

developed a glass-based coating that he says could be applied to power lines and other outdoor electrical equipment. Simpson's powder creates a microscopic air layer between the coated material and any water on the surface so that, just like a lotus leaf, the material stays dry even if totally submerged in water.

In a simulation conducted in an environmental chamber at the lab, Simpson sprayed cables in freezing water and found that only a small ridge of ice accumulated, which easily vanished with a quick tap. “In the real world, vibration from power flow plus movement from wind would continually knock any ice off,” Simpson points out.

Built-in cleaning service

There's another feature of superhydrophobics that mimics the lotus leaf: “self-cleaning.” The lotus leaf's continual movement — caused by wind, rain, waves or passing animals — drags away dust particles, fungus or other potentially harmful contaminants. Similarly, Simpson's coating allows power lines and attached devices to repel water droplets that, in turn, carry away salt and other elements contributing to deterioration.

“Every winter, ice and freezing rain cause power lines to snap and equipment to short out,” Lovas remarks. “And in coastal areas, sea spray coats distribution and transmission equipment with corrosive salt. These harsh conditions cost electric utilities, and consequently consumers, millions of dollars every year in equipment damages. A superhydrophobic coating could prevent these problems and improve service reliability.”

If his formula proves effective in practical applications, Simpson estimates that losses to large transmission lines could be reduced by 40 percent to 90 percent — saving individual electric cooperatives hundreds of thousands of dollars annually.

CRN, in partnership with researchers at Georgia Institute of Technology, has been field testing its own superhydrophobic coating.

“Superhydrophobics are a prime focus for our research because part of our job is to create solutions for electric co-ops,” Lovas explains. “Ice and corrosion continue to be very expensive concerns. We hope to change all that.”

*Source: Cooperative Research Network
Angela Perez writes on technology issues for the National Rural Electric Cooperative Association.*