

# Currently Speaking

**Guernsey-Muskingum  
Electric Cooperative, Inc.**  
17 S. Liberty St.  
New Concord, Ohio 43762  
740-826-7661 — 800-521-9879  
www.gmenergy.com

## Board of Directors

Ed Bay .....Chairman  
Jim Rex .....Vice Chairman  
Jay Gray .....Secy.-Treasurer  
John Enos .....Director  
Brian Hill .....Director  
Duane Parks .....Director  
Shirley Stutz .....Director  
Daniel J. Gunsett .....Counsel  
Jerry Kackley ..General Manager/CEO

## Electric Rates Farm and Home Service rate schedule R-1

Service Availability Charge  
\$18/month  
First 500 kWh/month  
@ 12.919¢/kWh  
Over 500 kWh/month  
@ 10.795¢/kWh

## Seasonal Residential Service annual rate schedule S-1

Service Availability Charge  
\$216/year  
First 800 kWh/year  
@ 20.919¢/kWh  
Over 800 to 6,000 kWh/year  
@ 11.795¢/kWh  
Over 6,000 kWh/year  
@ 10.795¢/kWh

(Your minimum annual charge will be \$216 per year for service between March 1, 2012, and Feb. 29, 2013.)

## Commercial Service rate schedule C-1

Service Availability Charge  
\$18/month  
First 1,500 kWh/month  
@ 12.919¢/kWh  
Over 1,500 kWh/month  
@ 10.795¢/kWh

## Rider T —

Kilowatt-hour Tax applies to all rate schedules.  
First 2,000 kWh/month .465¢/kWh  
Next 13,000 kWh/month .419¢/kWh  
Over 15,000 kWh/month .363¢/kWh

## GMEC introduces new controller

Guernsey-Muskingum Electric Cooperative, Inc. welcomes Andy Bone to the cooperative crew. He began employment in September as the controller.

Bone resides in Hanover with his wife, Christina, and their children, Zack, 17, and Emily, 6. In his spare time, Andy enjoys playing golf and working on old cars. He also spends time watching his children in sports and coaches his daughter's tee-ball team.

Andy is a graduate of Ohio University and he brings work experience from Kaiser Aluminum in Heath where he was the plant controller.

We welcome Andy to the cooperative crew!



**Andy Bone  
Controller**

## Generation and transmission component changes

Your electric service bill is made up of various components. More than half of your bill is a generation and transmission component (GTC). This is used to cover all the costs of generating electricity and transmitting it to substations to be used by the cooperative's members. The last time the GTC was changed was with the July 2012 bill. Since that time, it has been at the 7.95 cents per kilowatt-hour level. Looking ahead and projecting the rate for the next three months, the GTC will increase by 1.5 mils to 8.10 cents per kilowatt-hour, effective with the October bill, which you will receive around Nov. 10.

No coverage of local expenses is included in the GTC charge. The GTC will continue to be revised quarterly!

## FREE water heater services

How would you like to have your electric water heater serviced for free? That is exactly what you can get when you join our load control program. Let us install a radio-controlled switch on your electric water to help control our peak loads (primarily on the hottest summer afternoons), and in return we will provide free servicing of your water heater (elements, thermostats, etc). You will also get rebates when you replace the water heater. These rebates are especially attractive if you choose our Vaughn S Series tank with the clean-out hole. For more information just call Guernsey-Muskingum and ask for the Member Services Department.



## Cooperative holiday hours

**Office closed: Thanksgiving, Thursday, Nov. 22**  
**Office closed: Day after Thanksgiving, Friday, Nov. 23**  
**Office closed: Christmas Eve, Monday, Dec. 24**  
**Office closed: Christmas Day, Tuesday, Dec. 25**  
**Office closed: New Year's Day, Tuesday, Jan. 1**

If outages occur during these holidays, someone will be working at the G-M office round-the-clock to dispatch a trouble crew to correct your problem. G-M's drop box is always available for your convenience.

## Great weather for an energy audit

The weather is cooling off and now is the time to get on our schedule for a complete home energy audit. Who knows if this winter will be as cold as last summer was hot; but regardless, with ever increasing energy costs it is an excellent time to have an inspection



performed. It can save you money, increase your comfort or just answer your questions.

Guernsey-Muskingum Electric can provide members with a home energy audit to help start you down this path. Your energy advisor, Ray Crock, uses the latest technology to find air leaks within your home using a blower door and an infrared camera.

An infrared camera shows surface temperatures in color, with red and white being the warmest and blue to black being the coldest. This camera, teamed up with a blower door test, can find areas in your home where unsuspected

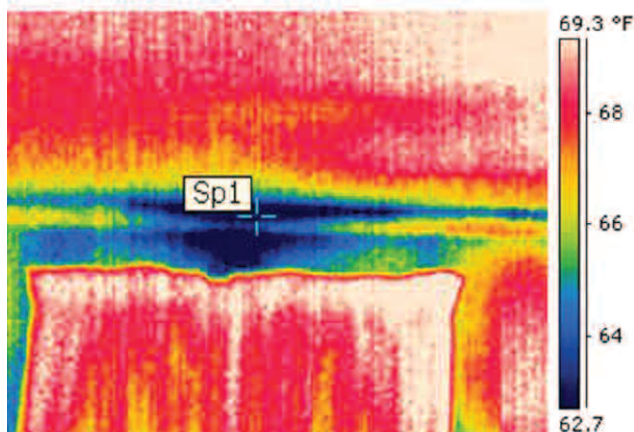
leaks are creating increased energy use. The blower door test uses a large fan that is capable of pulling up to 6,000 cubic feet per minute (CFM). It will lower the air pressure in the home down to a level compar-

ble to a 20 mile per hour wind blowing on all four sides of your home.

The blower door is generally connected to the main entrance of the home. One important note – if you have a wood burning stove or fireplace, the fire must be out and the ashes cleaned out. With the blower door running, we can easily find leaks and other opportunities by feel and with the infrared camera. The member is given possible solutions to any opportunities found. Remember that



*Ray Crock,  
Energy Advisor*



with the infrared camera we do not want your home to be black and blue.

There is no cost to schedule a home energy audit. Call 800-521-9879 and ask for Ray, your energy advisor.



### Veterans Day

Guernsey-Muskingum Electric thanks all veterans and their families for their sacrifices.



### Energy Efficiency

### *Tip of the Month*

Your kitchen can yield big energy savings. Check the refrigerator door seal for a tight fit. Run only full dishwasher loads, and use the microwave rather than oven to reheat food and make small meals. Finally, unplug small appliances when not in use — many draw power even when turned off. Find more ways to save at TogetherWeSave.com.

Source: Touchstone Energy® Cooperatives

## Extension cord safety: Make smart connections

During the holiday season, families often string together extension cords without a second thought. Unfortunately, not all cords are created equal.

Just because an extension cord can reach an outlet across a room doesn't mean it's the right one for the task at hand. If a tool, appliance or holiday display draws more current than an extension cord can carry, it may cause the cord (and whatever is connected to it) to overheat and start a fire.

Cords come in many lengths and

are marked with a size or gauge. The gauge is based on the American Wire Gauge (AWG) System, in which the larger the wire, the smaller the AWG number.

For example, a 12-gauge wire would be larger and power larger wattage appliances than a 14-gauge wire. A cord, based on its gauge, can power appliances of a certain wattage only at specific distances. As the cord gets longer, the current-carrying capacity of the cord drops.

## Is that a GMEC pole?

During storms and auto accidents we get much valuable information from members via phone calls. Sometimes however, we get reports of down lines and poles that are not GMEC owned.

Every one of our poles is now identified by a six digit number on a vertical yellow pole tag. Guernsey-Muskingum Electric has the only vertical tag in this area and it is marked with RE (Rural Electrification) and GMEC at the bottom. Some poles may have other tags and numbers since many are shared with phone and cable providers (even AEP).

If you can give us the six digit number from the pole of an observed problem, we can locate that pole on our system.



Using the right cord for the job is only the first step in using extension cords safely. Follow these tips to ensure safe use and make smart connection decisions:

Look for the Underwriters Laboratories (UL) symbol. The UL mark means that samples of the cord have been tested for safety hazards.

Never use an indoor extension cord outdoors, as it could result in electric shock or trigger a fire. Extension cords that can be used outdoors will be clearly marked "Suitable for Use with Outdoor Appliances."

Extension cords should not be placed underneath rugs or other heavy furniture; tacked in place to a wall or taped down; or used while coiled or bent. Match the length of the cord to your needs.

Store all cords indoors when not in use. Outdoor conditions can deteriorate a cord over time.

Unplug extension cords when not in use. The cord will continue conducting electricity until unplugged.

On cords with more than one outlet, use the covers provided for unused openings. Children and pets face serious injury if they chew on unused outlets or stick sharp metal objects into the openings.

Do not use extension cords that are cut or damaged. Touching even a single exposed strand of wire can result in an electric shock or burn.

Never file or cut the plug blades or grounding pin of an extension cord or appliance to plug it into an old outlet.

As a safety feature, extension cords and most appliances boast polarized plugs (one blade wider than the other). These special plugs are designed to prevent electric shock by properly aligning circuit conductors. If a plug does not fit, have a qualified electrician install a new outlet.

*Source: Underwriters Laboratories, Inc.*



# Co-op Notes

## Geothermal heating/cooling system — \$300 rebate

We have a \$300 rebate to help pay for the most efficient underground heating, cooling and hot water system available today. A radio-controlled switch is required on the unit and on your electric water heater of at least 40-gallon capacity. More than 260 of our members are using geothermal.

## Dual Fuel — \$300 rebate

If you install a new add-on electric heat pump with a fossil-fuel back-up and have an electric water heater, which is at least 40-gallon capacity, you are eligible for a \$300 rebate. Radio-controlled switches are required to be installed on both the heat pump and water heater. Please call your cooperative for details. More than 800 members are using Dual Fuel.

## Cool Returns — \$100 rebate

Are you having central air conditioning installed or a new electric heat pump with electric resistance heat back-up? Allow your cooperative to install a radio-controlled switch and receive a \$100 rebate check. More than 100 members are using cool returns.

## Water heater with a hole

The four-inch hole in the side of our tank is great for cleaning out sediment. This rebated tank is available for *free delivery*. We also have \$50 or \$100 checks to send you if you purchase a tank somewhere else. Give us a call for details.

## Water heater installation available

If you purchase your water heater from G-M, our members services technician, Tim Fisher, can install it for an additional charge. Give us a call.

## Radio-controlled switch

“What a deal!” If you don’t already have a radio-controlled switch for your electric water heater, at least 40-gallon capacity, please call and Tim Fisher will install one.....FREE. More than 5,300 G-M members have a RCS on their water heater. This entitles you to a discount and free maintenance (except cleaning) including parts and labor on your electric water heater. Some exclusions apply, call us for details.

## GenerLink™

We want you to use your portable generator safely. Call the member services department at GMEC and ask them about GenerLink™. GenerLink eliminates the use of extension cords and other connections that can be dangerous to members and linemen.

## Meter reading

You can enter your meter readings online at our website, [www.gmenergy.com](http://www.gmenergy.com). And as always you can mail your readings or call us 24 hours a day with meter readings.

## Co-op Connections Card

The Co-op Connections® Card is free to all GMEC members and one card can be used by the entire family. The card can also be used to receive discounts nationwide on lodging, entertainment, dining and more. Visit [www.gmenergy.com](http://www.gmenergy.com) and click on the link to explore the possible discounts available to you.

*As a member of an electric cooperative, you have access to free energy savings tips and information that also will help you save money. We also offer in-home energy audits.*

*Whether your question is about heating and cooling systems, weatherproofing and insulation, water heaters or other appliances, the Energy Advisor at GMEC can help.*

*Call your co-op office today to have your questions answered. 800-521-9879*



Your Touchstone Energy® Cooperative

## Is your name and location/ account number here?

If it is, call your cooperative’s office and receive a **FREE** home change out to compact fluorescent light bulbs. (Limit 12 bulbs) Thanks for reading the “local pages” of *Country Living* magazine.

- #10-0222-19-00 .....Mary C Bissonnette
- #17-0306-14-03.....Adam Arena
- #26-0211-01-00 .....Kurt Ufholz
- #29-0316-24-01 .....David E Huston
- #31-0427-05-00.....Penny Powelson
- #33-0119-80-02 .....Jerry A White Jr.
- #71-0010-04-00 .....Carl D Williams
- #95-0003-03-00 .....Ralph Savage